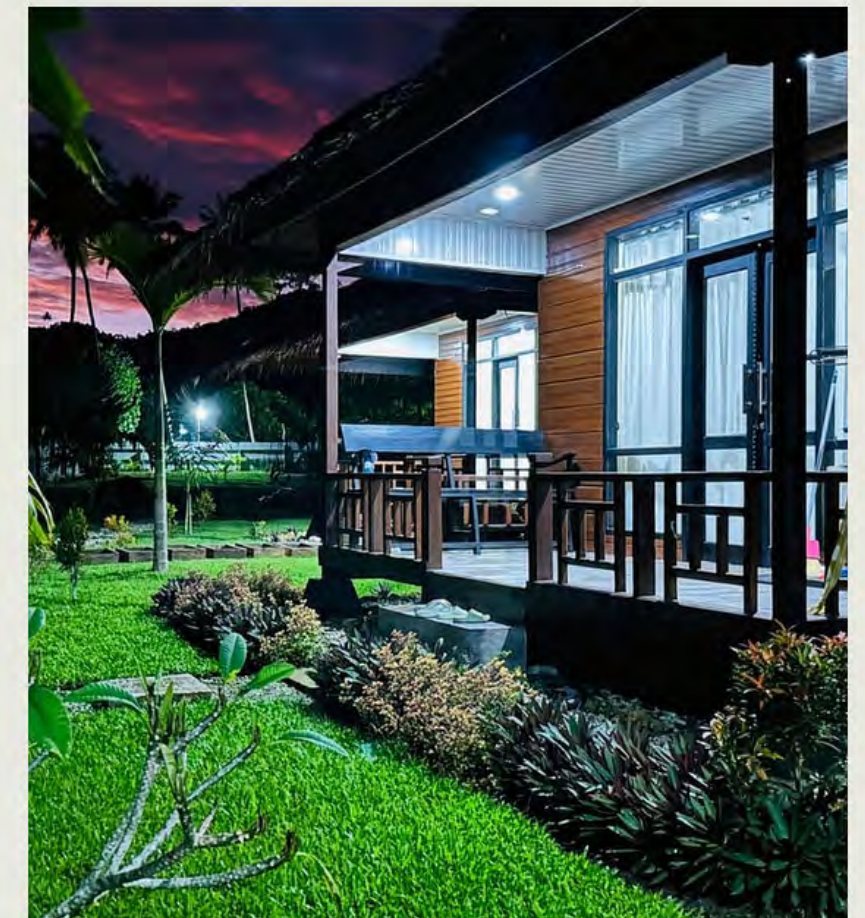




GUEST INFO PACK

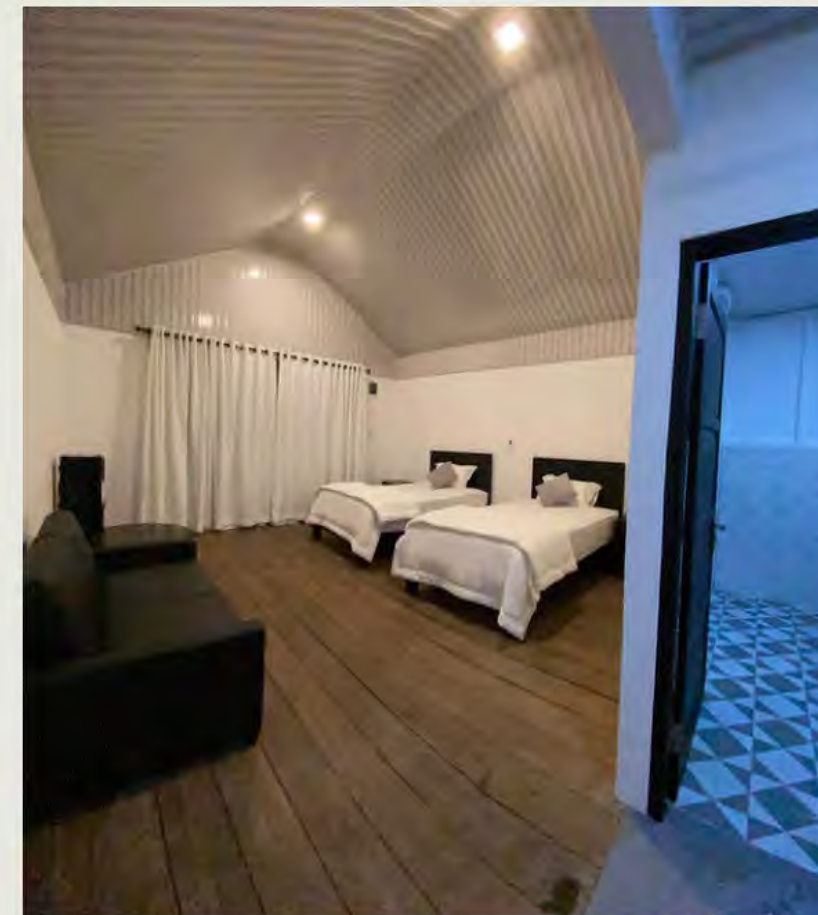
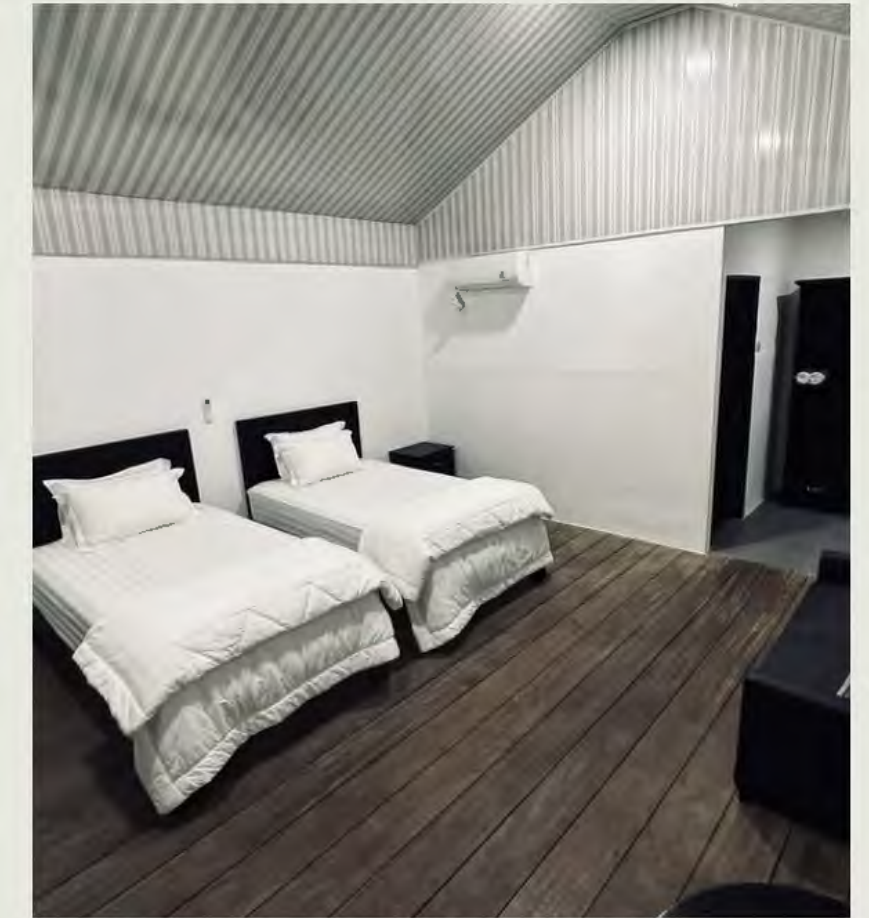
All-inclusive Package

- Airport transfers
- Three cooked meals per day from our qualified chef
- Surf guide
- Surf photography
- Air-conditioned bungalows with heated showers
- Unlimited water, tea, coffee and fruit



Brand new air conditioned villas with hotel quality bedding

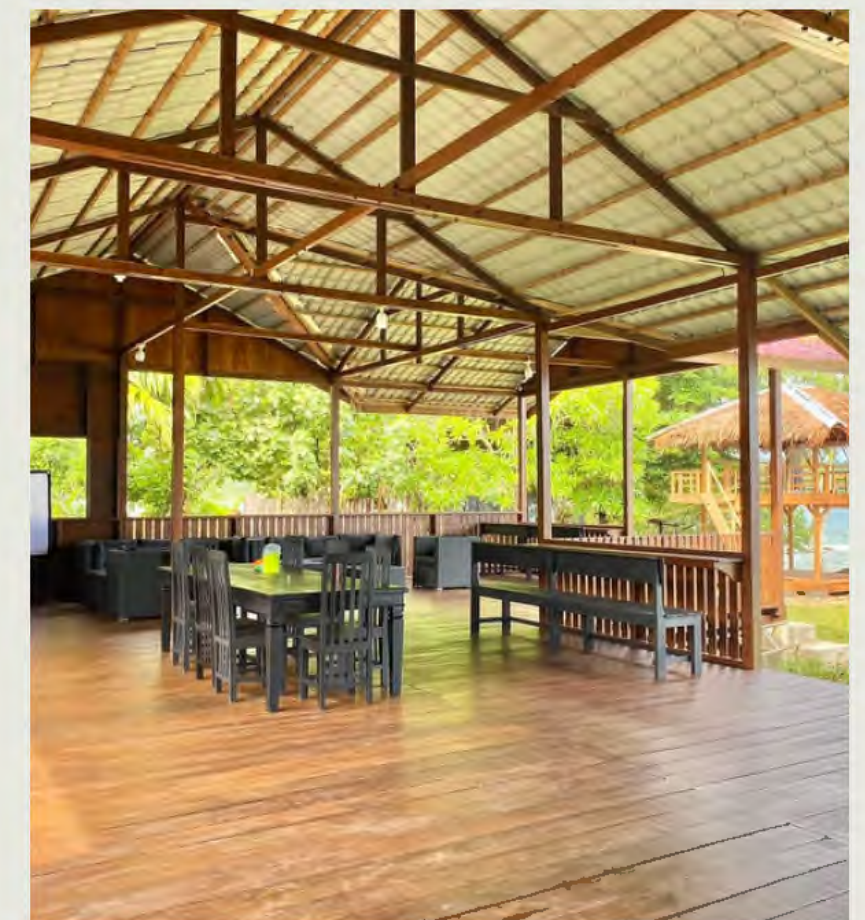
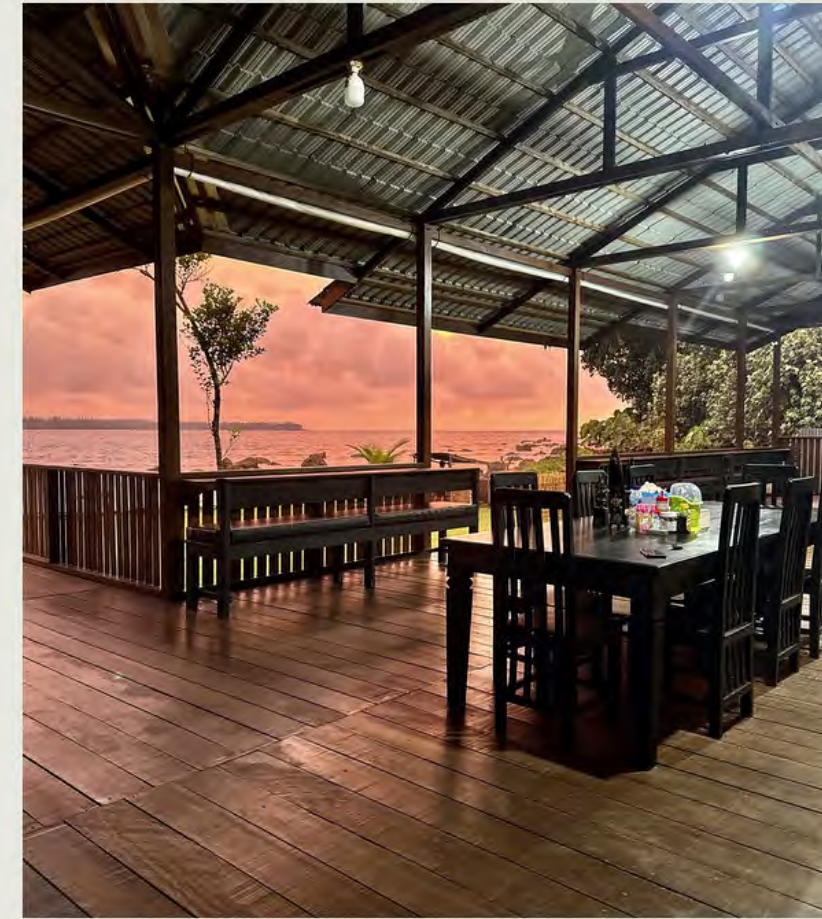
- Newly built large island style bungalows made from local Rasak wood with comfortable hotel quality beds
- Top of the range air conditioning and outdoor seating facing our breath-taking beach
- Private indoor toilet, heated shower and wardrobe to store your belongings
- Water dispenser with hot and cold drinking water





Entertainment

- Spacious entertainment area facing our own private beach
- Surf tower with comfortable seating and hammocks looking out to Dylan's Point
- Couches, bean bags and deck seating, it's the perfect setup after a long day of surfing
- Fire pit for barbeques, speakers and projector for sports and movies
- Free WI-FI throughout the entire resort. SIM cards (4G) are also available at the reception





Surge
Surf Villas

Food and Drinks

- Breakfast, lunch and dinner to be served at your own schedule
- Our chef will cater to your needs and preferences. We offer a wide range of local and western options making sure you are well looked after
- Unlimited water, tea coffee and fruit
- Our food is fresh produce from the island and prepared for each meal





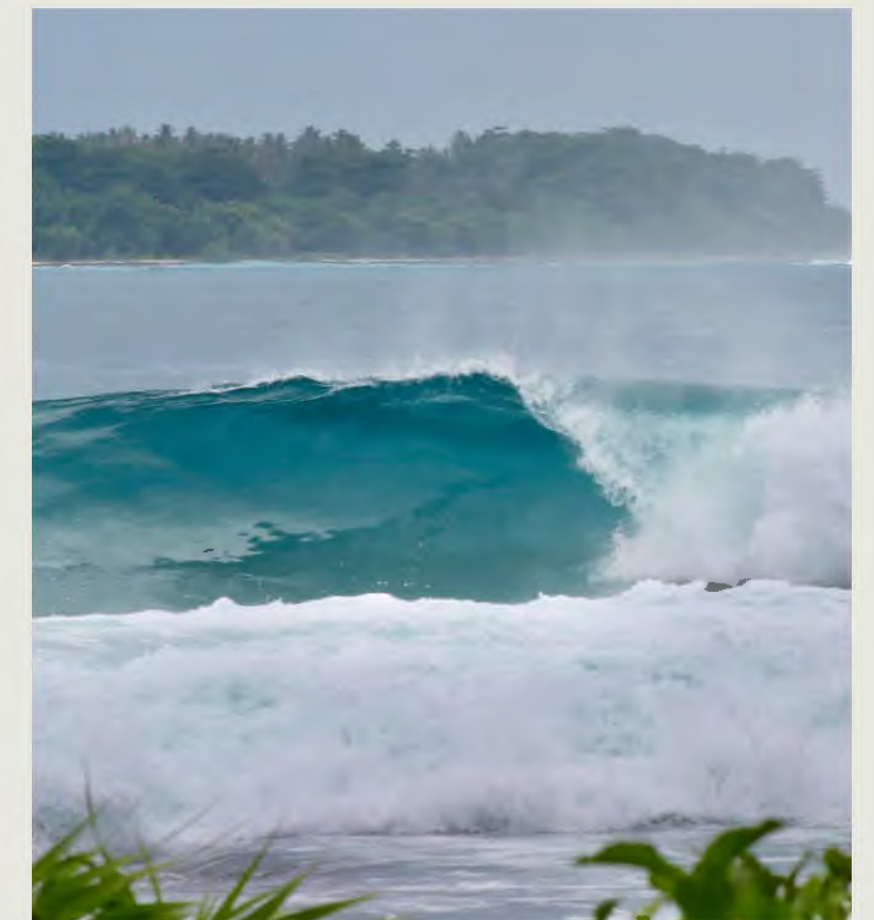
Rooms

- **Triple share**
 - \$ 90
 - AUD – per person, per night
- **Twin share**
 - \$ 120
 - AUD – per person, per night
- **Single**
 - \$ 160
 - AUD – per person, per night
- *Contact us for a discounted rate on a 10 night or more stay*



Additional info

- To get to Simeulue island you can fly to three major cities, KL, Singapore or Jakarta. It's then a short flight to Medan then a one hour flight to Simeulue island.
- Flights from Medan – Simeulue are currently running on Tuesdays, Thursdays and Saturdays. The flight leaves Medan at 8:50am so it's recommended to spend the night at Horizon hotel which is located above the airport.
- Surge surf villas is a short 10 minute drive from Simeulue airport
- Boat trips to nearby waves can be arranged for approximately 250,000 rp per person.
- Scooter and car hire is available for a daily rate of 70,000 rp per day.





SURF



RELAX



EAT



REPEAT